

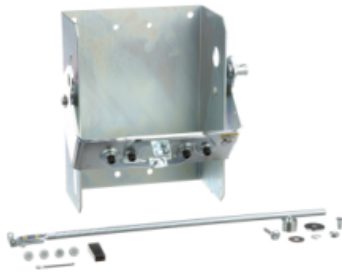
Product data sheet

Characteristics

9422RS1

Disconnect mechanism, circuit breaker, variable depth, 600A, 3 pole, operator only, for PowerPact D and L breakers

Product availability : Stock - Normally stocked in distribution facility



Main

Range	9422R
Product	Circuit Breaker Mechanism
Mounting Type	Flange rod variable depth
Certifications	CSA UL Recognized
Circuit Breaker Type	MG-NSJ 3 PowerPact D 3
Handle Type	Ordered separately

Ordering and shipping details

Category	21732 - 9422
Discount Schedule	CP1
GTIN	00785901551430
Nbr. of units in pkg.	1
Package weight(Lbs)	7.34 lb(US) (3.33 kg)
Returnability	Yes
Country of origin	MX

Packing Units

Unit Type of Package 1	PCE
Package 1 Height	6.80 in (17.272 cm)
Package 1 width	12.30 in (31.242 cm)
Package 1 Length	13.30 in (33.782 cm)

* Price is "List Price" and may be subject to a trade discount – check with your local distributor or retailer for actual price.

Offer Sustainability

California proposition 65	WARNING: This product can expose you to chemicals including: Lead and lead compounds, which is known to the State of California to cause cancer and birth defects or other reproductive harm. For more information go to www.P65Warnings.ca.gov
REACH Regulation	REACH Declaration
EU RoHS Directive	Compliant EU RoHS Declaration
Mercury free	Yes
RoHS exemption information	Yes
China RoHS Regulation	China RoHS declaration Product out of China RoHS scope. Substance declaration for your information.
PVC free	Yes

Contractual warranty

Warranty	18 months
----------	-----------